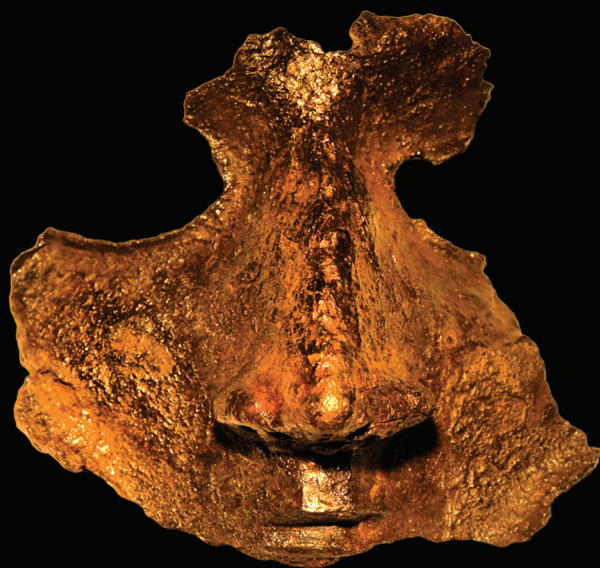


ЛЕТОПИСНЫЙ  
«ИЗЯСЛАВЛЬ»

БОЛЬШОЕ  
ШЕПЕТОВСКОЕ  
ГОРОДИЩЕ

В СВЕТЕ  
АРХЕОЛОГИИ



Том 1

МАТЕРИАЛЫ РАСКОПОК  
М. К. КАРГЕРА  
1957–1964 ГОДОВ  
В ИССЛЕДОВАНИЯХ  
1960–1980-Х ГОДОВ

RUSSIAN ACADEMY OF SCIENCES  
Institute for the History of Material Culture  
Proceedings. Vol. LV

**Medieval “Izyaslavl”**  
**The Large Fortified Settlement**  
**near Shepetovka,**  
**in the light of archaeology**

**Volume I**

**Materials from the archaeological excavations**  
**of Mikhail Karger 1957–1964**  
**investigated in the 1960s–1980s**



Nestor-Historia  
St. Petersburg  
2020

РОССИЙСКАЯ АКАДЕМИЯ НАУК  
Институт истории материальной культуры  
Труды. Т. LV

# **Летописный «Изяславль»**

## **Большое Шепетовское городище в свете археологии**

### **Том I**

**Материалы раскопок М. К. Каргера 1957–1964 годов  
в исследованиях 1960–1980-х годов**



Нестор-История  
Санкт-Петербург  
2020

УДК 90  
ББК 63.4(2)2  
Л52



Издание осуществлено при финансовой поддержке Российского фонда фундаментальных исследований по проекту № 20-19-00114, не подлежит продаже

Работа по подготовке издания выполнена при финансовой поддержке Российского фонда фундаментальных исследований по проекту № 18-09-00753

*Печатается по решению Ученого совета ИИМК РАН*

*Редакция:* К. А. Михайлов, А. А. Пескова (отв. ред.-сост.), О. А. Щеглова

*Рецензенты:* д-р ист. наук С. В. Белецкий, д-р ист. наук А. Е. Мусин

**Л52**

**Летописный «Изяславль»: Большое Шепетовское городище в свете археологии.** Том I. Материалы раскопок М. К. Каргера 1957–1964 годов в исследованиях 1960–1980-х годов / ред.-сост. А. А. Пескова. — СПб. : Нестор-История, 2020. — 264 с., ил. — (Труды ИИМК РАН. Т. LV).

**Medieval “Izyaslavl”:** The Large Fortified Settlement near Shepetovka, in the light of archaeology. Volume 1. Materials from the archaeological excavations of Mikhail Karger 1957–1964 investigated in the 1960s–1980s / ed. by A. Peskova. — St. Petersburg : Nestor-Historia, 2020. — 264 p., il. — (Proceedings of IHMC RAS. Vol. LV).

ISBN 978-5-4469-1696-2

DOI 10.31600/978-5-4469-1696-2

Настоящее издание представляет собой I том материалов и исследований из раскопок Большого Шепетовского городища, широко известного специалистам как летописный «Изяславль» (1957–1964 гг., рук. М. К. Каргер). В нем собраны результаты изучения трех массовых категорий археологических находок — исследования А. Н. Кирпичникова, посвященные предметам вооружения, О. В. Овсянникова о керамике и В. И. Цалкина о фауне, проведенные в 1960-е гг. и не утратившие актуальности сегодня, которые вводят в научный оборот многотысячные археологические материалы, отражающие хозяйственный уклад и социально-культурный облик древнерусского города конца XII — первой половины XIII в. Публикуется также выполненный Г. А. Романовой краткий обзор материалов позднеимперского времени, относящихся к поселению, предшествовавшему на этом месте средневековому городу. Для археологов, историков, музейных работников, всех интересующихся историей Древней Руси и специалистов по истории Восточной Европы в позднеимперское время.

This publication presents readers with the results of the study of three mass-scale categories of archaeological finds from the excavations undertaken at the Bolshoye Shepetovka fortified settlement (1957–1964, led by Mikhail Karger), which is widely known among specialists as medieval “Izyaslavl”, referred to in the chronicles. Anatolii Kirpichnikov’s research was devoted to weaponry, that of Oleg Ovsyannikov to the pottery and that of Venyamin Tsalkin to the faunal remains — all in the 1960s, but they remain just as relevant and topical today. The publication introduces into the academic literature thousands of archaeological finds reflecting the working environment and socio-cultural character of an Early-Rus’ town at the end of the 12th century and during the first half of the 13th. It also includes a short survey, carried out by Galina Romanova, of materials dating from the Late Roman period and relating to the settlement which pre-dated the fortified settlement at this site. The book is intended for archaeologists, historians, museum staff and all those who are interested in the history of Early Rus’ and who specialize in the history of Eastern Europe during the Late Roman era.

ISBN 978-5-4469-1696-2



9 785446 916962

**УДК 90  
ББК 63.4(2)2**

© Институт истории материальной культуры РАН, 2020  
© Авторы статей, 2020  
© Пескова А. А., научное редактирование, 2020  
© Издательство «Нестор-История», 2020

## List of illustrations

### The history of research into the fortified settlement at the village of Gorodishche in the Shepetovka District of the Khmelnytsky Region of Ukraine

**Fig. 1.** Portrait of Mikhail Karger from the 1960s (Photographic Dept of the Academic Archive of the Institute for the History of Material Culture, Russian Academy of Sciences [PD AA HIMC RAS]: Negative 176721).

**Fig. 2.** Diagram showing locations of fortified settlements near the village of Gorodishche in the Shepetovka District, Khmelnytsky Region, Ukraine: (1) Large fortified settlement at “Valy” (“Izyaslavl” of the Chronicles): (2) Small fortified settlement at Vysokoe (after: Peskova 2009: Illustration 1).

**Fig. 3.** View of the Large Fortified Settlement at Shepitovka from the North-East (Photograph from M. Karger’s personal archive).

**Fig. 4.** Expedition life: (a) Excavations in the citadel, 1957 (foreground, right: Mariana Malevskaya); (b) Clearing clusters of bones; (c) Washing and packing away bones; (d) Anatolii Kirpichnikov photographing a stove, 1958; (e) Clearing wooden structures, 1957; (f) Topographical survey (Photograph from M. Karger’s personal archive).

**Fig. 5.** Mikhail Karger at excavations in the fortified settlement, 1958; (a) Expedition leader deep in thought; (b) In discussion with Anatolii Kirpichnikov; (c) Taking photographs; (d) Demonstrating how to hold a spade; (e) Setting out to Izyaslav (?) on a day off (Photograph from M. Karger’s personal archive).

**Fig. 6.** Members of the Expedition team: (a) 1957 (front row, third from the left — Mark Miroljubov); (b) 1964 (top row in the centre — core members of the team: Leonid Fligelman, Valentin Bulkin, Oleg Ovsyannikov, Anatolii Kirpichnikov; first on the left in the bottom row — Vasili Bulkin) (Photograph from M. Karger’s personal archive).

**Fig. 7.** “Izyaslavsky” archaeological micro-region (after: Demidko 2017: Fig. 4).

**Fig. 8.** Plan of the fortified settlement including the base frames laid out under its inner rampart (after: Peskova 2009: Illustration 11).

**Fig. 9.** Plan of the fortified settlement showing excavation trenches and the years they were studied (field sketch prepared by E. Nikitina).

**Fig. 10.** Remains of burnt hollow log-buildings along the western line of fortifications (Photograph from M. Karger’s personal archive).

**Fig. 11.** Traces of the town’s destruction: (a) skeletons of those who perished; (b) pile of bones (after hygienic burial) (Photograph from M. Karger’s personal archive).

**Fig. 12.** Unearthed complexes: (a) remains of dwelling structures; (b) household utensils.

**Fig. 13.** Stain left from a building after unfinished excavation (Photograph 6 from album prepared to accompany M. Karger’s 1962 report, held in Kiev).

- Fig. 14. Excursion to the fortified settlement (Photograph from M. Karger's personal archive).  
 Fig. 15. Oleg Ovsyannikov, early 1960s (from O. Ovsyannikov's personal archive).  
 Fig. 16. Anatolii Kirpichnikov, early 1960s (Photograph from A. Kirpichnikov's personal archive).

### Late Roman layer of a medieval fortified settlement near the village of Gorodishche

Fig. 1. Arrangement of Buildings № 1 and № 2 from the Roman period within the area of the fortified settlement (Drawing by E. Nikitina).

Fig. 2. Hand-moulded vessels found in a cluster of pottery articles in Quadrant Г-9 within the fortified settlement: (1) bowl (ГД-58/5890; (2) bowl (ГД-58/5891); (3) pot (ГД-58/5889). The inventory numbers are in accordance with the current deposition in the State Hermitage Museum (Photograph by A. Kononovich, drawing (1,2) — by G. Romanova; (3) — by E. Kononovich based on a sketch by G. Romanova).

Fig. 3. Remains of building №1 with a discarded pile of loom weights: (1) Plan of building № 1; (2) Clay loom weights from building № 1 (Drawing by E. Nikitina, Photograph from the PD AA HIMC RAS, Print O.2567-69).

Fig. 4. Loom weights from building №1 held in the collection of the State Hermitage Museum: (1) ГП-58/5510; (2) ГП-58/5509; (3) ГП-58/5513; (4) ГП-58/5510 (Photograph by A. Litvinenko).

Fig. 5. Pottery from the Late Roman period: (1–2) — wheel-made (un-numbered); (3–5) — hand-moulded cups (3 — ГП-59/2956; 4 — ГД-58/5762; 5 — ГП-60/4472) (1, 2, 3, 5 — Photographs from PD AA IHMC RAS, album O.2567; 4 — Photograph by A. Kononovich).

Fig. 6. Remains of building № 2 (Drawing by E. Nikitina).

Fig. 7. Fibulae: (1) ГД-58/7880; (2) ГД-58/896; (3) (un-numbered); (4) ГД-58/7881; (5) ГД-58/7882; (6) ГД-58/7879; (7) (un-numbered). (1) — iron; (2–7) — bronze; (1–7) — Photographs from the PD AA IHMC RAS: Negative II78796.

Fig. 8. Fibulae: (1) ГД-58/7880; (2) ГД-58/896; (3) ГД-58/7881; (4) ГД-58/7882; (5) (un-numbered); (6) (un-numbered); (7) ГД-58/7879.

Fig. 9. Articles made of bone: (1–5) — styluses and burnishers; (6, 7) combs (Drawings by E. Kononovich based on sketches by G. Romanova; photographs by A. Kononovich).

Fig. 10. Roman coins: (1) Titus denarius (79–82 AD); (2) Marcus Aurelius denarius (145–160 AD) (1–2) — silver. Photographs from PD AA IHMC RAS: Negative 154379, 154380, 154964, 154965.

Fig. 11. Clay spindle whorls. Photographs by A. Kononovich. Drawings by E. Kononovich.

Fig. 12. Dating small objects: (1–3) — fibulae (1 — ГП-61/200; 2 — ГП-60/10; 3 — ГП-61/169); (4) fragment of the phial ГП-64/965. (1–3) — bronze; (4) — glass (Drawings by G. Romanova).

### Weaponry from Medieval “Izyaslavl”

Fig. 1. Weapons and spurs from the Late Roman period: (1–2) spurs; (3–7) spearheads; (1–7) iron.

- Fig. 2. Typology of spearheads. Types I–III.
- Fig. 3. Spearheads: (1) — Bear-spear; (2–3, 5–6, 9) — pikes; (4, 7–8) — spearheads; including 1 and 4, which were distorted spearheads (1–9) iron.
- Fig. 4. Typology of battle-axes. Types I–III.
- Fig. 5. Battle-axes: (1–3) — Type II; (4) — Type I. (1–4) iron.
- Fig. 6. Swords: (1) of East-European origin; (2, 3) — of West-European origin (Blade of sword № 2 bears a Latin inscription); (1–3) — steel.
- Fig. 7. Swords prior to restoration.
- Fig. 8. Typology for sword parts: pommels (top row), cross-guards (middle row), sheath terminals (bottom row).
- Fig. 9. Sword parts: (1–2) — pommels of Type I swords; (3–4) — sheath terminals of Type II swords; (5–6) — sheath terminals of Type I swords; (1–2), (5–6) — bronze; (3–4) — iron.
- Fig. 10. Examples of sabres (drawing from the personal archive of A. Kirpichnikov).
- Fig. 11. Sabre with an ornamental blade. Steel.
- Fig. 12. Typology for sabre parts: pommels (top row), cross-guards (middle row), detail of a sling and sheath terminals (bottom row).
- Fig. 13. Dagger. Iron.
- Fig. 14. Typology for maces and bludgeons: maces (top and middle rows); bludgeons (bottom row).
- Fig. 15. Examples of maces and bludgeons: (1–6) — maces; (7–12) — bludgeons; (1–3, 6, 11) — iron; (4–5, 7–10, 12) — bronze.
- Fig. 16. Main types of arrows with indication of distortion areas.
- Fig. 17. Examples of distorted arrows: (1–20) — iron.
- Fig. 18. Early Rus' arrows from a single quiver set. (1–7) — iron.
- Fig. 19. Typology for arrowheads: (I–XIV) — iron; A–B — bone.
- Fig. 20. Bone arrowheads: (1–3) — Type A; (4–6) — Type B; (7–16) — arrowhead fragments.
- Fig. 21. Typology for crossbow bolts and a crossbow hook.
- Fig. 22. Crossbow hook. Iron.
- Fig. 23. Chain-mail with an encolpion cross inside it. Iron.
- Fig. 24. Helmet with aventail (*barmitsa*). Iron.
- Fig. 25. Military half-mask with a beak-shaped nose-plate. Iron.
- Fig. 26. Anthropomorphic combat mask: (1) — Photograph from PD AA IHMC RAS, Negative I 54213); (2) Photograph by K. Mikhailov (current condition); (3) Drawing from A. Kirpichnikov's archive.
- Fig. 27. Different types of horse-shoes: (1–7) — horse-shoes with a wavy edge; (8) horse-shoe with a smooth edge. Iron.
- Fig. 28. Typology of spurs.
- Fig. 29. Examples of spurs: (1–2, 5–6) — Type V (spurs with a small wheel); (3–4, 7–8) — Type II; (9–10) — Type IV (encrusted spurs); (11–18) — Types III–IV.
- Fig. 30. Bone whip pommels.
- Fig. 31. Typology for stirrups.
- Fig. 32. Examples of stirrups: (1–3) — Types I and IA; (4) — Type II. Iron.

### Pottery from medieval “Izyaslavl”

- Fig. 1. Intact and restored pottery vessels from the excavations in the fortified settlement: (1) found in 1957–1958; (2) found in 1959 (the amphora shown in the foreground came from

excavations at Galich); (3) found in 1960 (one vessel is from the Late Roman period) (PD AA IHMC RAS): Prints O.2566.22, 32, 73).

Fig. 2. Assemblages of pottery vessels originating from dwellings: (1–3) Quadrant  $\Phi$ -43 ( $\Gamma\Delta$ -58); (4–7) — Quadrant  $\Psi$  in Quadrant-34, Quadrants IIIII in Quadrants — 36–37 ( $\Gamma\Delta$ -59); (8–11) — Quadrant H in Circle-15 ( $\Gamma\Delta$ -58). Photograph from M. Karger's archive.

Fig. 3. Assemblages of pottery vessels originating from dwellings: (1–3) — Quadrant III in Circle — 83 ( $\Gamma\Pi$ -62); (4–7) — Quadrant  $\Psi$ -88 ( $\Gamma\Pi$ -59). Photograph from M. Karger's personal archive.

Fig. 4. Assemblages of pottery vessels found at the line of defensive logs (storerooms) in the "Posad": (1–3) — Quadrant  $\delta$ - $\mu$ -99–102 ( $\Gamma\Pi$ -57); (4–6) — Quadrant  $\alpha\beta$ -101–102 ( $\Gamma\Pi$ -57, 59). Photograph from M. Karger's personal archive.

Fig. 5. Assemblages of pottery vessels found at the line of defensive logs (storerooms) in the "Posad": (1–5) — Quadrant  $\alpha\beta\gamma$ -97 ( $\Gamma\Pi$ -57); (6–10) — Quadrant  $\Delta$ 3 in Circle-112–113 ( $\Gamma\Pi$ -62). Photograph from M. Karger's personal archive.

Fig. 6. Assemblage of pottery vessels found at the line of defensive logs (storerooms) in the *Detinets* (citadel): Я-43-44 ( $\Gamma\Delta$ -57): (1–2) — vessels; 3 — outdoor photograph of the assemblage. View from the South-West. Photograph from M. Karger's personal archive.

Fig. 7. Rim types of pots from the first group (diagram).

Fig. 8. Pots of the first group, Type I: (1) —  $\Gamma\Pi$ -57/2011; (2) —  $\Gamma\Pi$ -61/3262; (3)  $\Gamma\Pi$ -59/2942; (4) un-numbered; (5)  $\Gamma\Delta$ -57/7643; (6)  $\Gamma\Pi$ -61/3982; (7)  $\Gamma\Pi$ -62/983; (8) un-numbered; (9)  $\Gamma$ -59/Galich(?); (10)  $\Gamma\Delta$ -58/9106; (11)  $\Gamma\Pi$ -57/9647 or  $\Gamma\Pi$ -64/1639; (12) un-numbered; (13)  $\Gamma\Pi$ -61/1953 or  $\Gamma\Pi$ -59/2961; (14)  $\Gamma\Delta$ -58/3563; (15)  $\Gamma\Pi$ -61/1956; (16) un-numbered; (17)  $\Gamma\Delta$ -58/6416.

Fig. 9. Pots of the first group, Type I (continuation): (1) un-numbered; (2)  $\Gamma\Delta$ -58/8917; (3) un-numbered.

Fig. 10. Pots of the first group, Type II: (1)  $\Gamma\Delta$ -59/3573; (2)  $\Gamma\Pi$ -62/987; (3)  $\Gamma\Pi$ -58/5288; (4)  $\Gamma\Pi$ -57/9492; (5)  $\Gamma\Pi$ -62/1762; (6)  $\Gamma\Pi$ -61/?; (7)  $\Gamma\Pi$ -60/8065; (8)  $\Gamma\Pi$ -59/2951; (9)  $\Gamma\Pi$ -60/5867; (10)  $\Gamma\Pi$ -60/5314; (11)  $\Gamma\Delta$ -57/3491; (12)  $\Gamma\Pi$ -60/2537; (13)  $\Gamma\Pi$ -59/2980; (14)  $\Gamma\Pi$ -63/541; (15)  $\Gamma\Pi$ -60/2535; (16)  $\Gamma\Pi$ -59/2956; (17) un-numbered; (18)  $\Gamma\Pi$ -59/2944; (19)  $\Gamma\Delta$ -57/?.

Fig. 11. Pots of the first group, Type II (continuation): (1) —  $\Gamma\Pi$ -59/6398; (2)  $\Gamma\Pi$ -59/9108; (3)  $\Gamma\Delta$ -57/9643; (4)  $\Gamma\Pi$ -62/1000; (5) un-numbered; (6)  $\Gamma\Pi$ -62/2993; (7) un-numbered; (8)  $\Gamma\Pi$ -62/2934.

Fig. 12. Pots of the first group, Type III: (1) —  $\Gamma\Pi$ -62/908; (2)  $\Gamma\Delta$ -57/7633; (3)  $\Gamma\Pi$ -62/991; (4)  $\Gamma\Pi$ -59/2950; (5)  $\Gamma\Pi$ -57/9401; (6)  $\Gamma\Pi$ -62/2940; (7)  $\Gamma\Pi$ -59/2947; (8)  $\Gamma\Delta$ -58/5875; (9)  $\Gamma\Pi$ -59/3358; (10)  $\Gamma\Delta$ -58/9882; (11) un-numbered.

Fig. 13. Pots of the first group, Type III (continuation): (1)  $\Gamma\Delta$ -58/11229; (2) un-numbered; (3)  $\Gamma\Pi$ -62/1004; (4)  $\Gamma\Pi$ -62/2947.

Fig. 14. Pots of the first group, Type IV: (1)  $\Gamma\Pi$ -62/992; (2)  $\Gamma\Delta$ -58/?; (3)  $\Gamma\Delta$ -58/5881; (4)  $\Gamma\Pi$ -62/990; (5)  $\Gamma\Pi$ -57/9646; (6)  $\Gamma\Pi$ -57/9649; (7)  $\Gamma\Pi$ -57/9593; (8)  $\Gamma\Pi$ -57/9589; (9)  $\Gamma\Pi$ -62/1003; (10)  $\Gamma\Delta$ -59/5042; (11)  $\Gamma\Pi$ -62/1062.

Fig. 15. Pots of the first group, Types V-VI and individual shapes: (2, 4) — Type V ( $\Gamma\Pi$ -62/989;  $\Gamma\Delta$ -58/3565); (5, 6) — Type VI ( $\Gamma\Pi$ -57/9594,  $\Gamma\Pi$ -63/544); (1, 3) individual shapes (dating from the late-13<sup>th</sup> or 14<sup>th</sup> century) ( $\Gamma\Pi$ -62/989,  $\Gamma\Delta$ -58/3565).

Fig. 16. Rare forms of decoration on pots of the first group (1)  $\Gamma\Pi$ -57/7633; (2)  $\Gamma\Pi$ -60/7329; (3)  $\Gamma\Pi$ -62/2946; (4) un-numbered. Photograph from M. Karger's personal archive.

Fig. 17. Decorative motifs on pots of the second group (with a cylindrical neck) (diagram).



Fig. 18. Rim types from pots of the second group (vessels with a cylindrical neck): (1–20) — rim types; (21) — vessel fragment (ГД-57/9809).

Fig. 19. Jugs: (1–14) — neck fragments (ГП-63/9503; ГП-57/6661; ГД-57/873; ГП-62/1332; ГП-63/9598; ГП-61/2844; ГД-57/1437; ГП-61/4950; ГП-60/3149; ГП-63/10151; ГП-62/2954; ГП-64/1508; ГД-58/5873; ГП-61/2295); 15 — jug with a wide cup-like rim (ГП-64/1643); (16) jug with a wide conical rim (ГД-58/3567).

Fig. 20. Jug-shaped vessels with a cylindrical neck with a ridge: (1) ГП-59/2943; (2) ГП-57/9596; (3) ГП-57/9595; (4) ГП-63/538; (5) — un-numbered; (6) ГП-59/2945; (7) ГП-60/2598; (8) ГД-58/3571; (9) ГД-58/3566. Photograph from M. Karger's personal archive.

Fig. 21. Jug-shaped vessels with a cylindrical neck with a ridge: (1) ГП-59/2943; (2) ГП-57/9596; (3) ГП-57/9595; (4) ГП-63/538; (5) un-numbered; (6) ГП-59/2945; (7) ГП-60/2598; (8) — ГД-58/5775; (9) — ГП-61/1952; (10) — ГД-58/3571; (11) — ГД-58/3566; (12) — ГД-58/5121; (13) — ГП-59/5330; (14) — ГД-58/3622.

Fig. 22. Jug-shaped vessels with a cylindrical neck and loops: (1–8) ГД-58/5879; ГД-58/3564; ГП-61/1958; un-numbered; ГП-62/997; un-numbered; ГД-57/2616; ГП-61/1959; un-numbered).

Fig. 23. Jug-shaped vessels with a cylindrical neck and loops: (1) ГД-58/5879; (2) ГД-58/3564; (3) ГД-57/2616 (or 2618); (4) ГП-61/1959; (5) un-numbered; (6) ГП-62/997; (7) ГП-59/2946. Photograph from M. Karger's personal archive.

Fig. 24. Jug-shaped vessels ("lahen"): (1–16) intact vessels (ГП-62/2942; ГД-58/5874; ГД-58/3575; ГП-60/5868; ГП-59/2955; ГП-62/994; ГП-57/9591; ГП-62/982; un-numbered, ГД-57/9604; ГП-62/993; ГП-60/2538; ГП-57/9489; ГД-57/9490; ГД-58/3570; ГД-58/5290).

Fig. 25. Jug-shaped vessels ("lahen"): (1–12) intact vessels and fragments: (ГП-62/2320; ГП-60/6581; ГП-59/3051; ГП-62/2300; ГП-60/6581; ГП-59/2999; ГД-58/3574; ГП-60/5869; ГП-59/3000; ГП-63/?; ГП-59/5981; ГП-57/9590).

Fig. 26. Jug-shaped vessels ("lahen"): (1–13) (ГД-57/9604; ГП-59/2954; ГП-59/2955; ГД-58/3574; ГП-62/982; ГП-62/994; ГП-64/1638; ГП-57/9642; ГД-58/5874; un-numbered; ГП-57/9489; ГП-60/2538; ГД-58/3562). Photograph from M. Karger's personal archive.

Fig. 27. Jug-shaped vessels ("lahen"): (1–10) (ГП-62/993; ГП-60/5869; ГП-64/1642; ГП-57/9590; ГП-60/5868; ГП-58/3575; ГП-57/9591; ГД-58/3570; ГП-60/2539; ГД-57/9490). Photograph from M. Karger's personal archive.

Fig. 28. Pithos-shaped vessel (un-numbered). Photograph from M. Karger's personal archive.

Fig. 29. Fragments of pithos-shaped vessels: (1–16) — rim types; 17–24 — large vessel fragments: (17–18) ГП-62/1886; (19) ГП-60/9023; (20) ГД-58/8665; (21) ГД-58/5376; (22) ГД-58/11045; (23) ГП-64/1600; (24) ГП-62/2843.

Fig. 30. Fragments of amphorae: (1, 2, 5 — small examples of Types IV and V (ГД-57/7466; ГП-63/11249; ГП-61/4832); (3) — Type II (ГП-60/8068); (4) — Type I (ГП-61/3943).

Fig. 31. Amphora of Type III: (1) complete amphora ГП-62/2945; (2) magnified fragment of the same amphora bearing a graffiti (no scale provided). Photograph from M. Karger's personal archive.

Fig. 32. Pottery lids: (22–28) — Type I (ГП-61/3607; ГП-60/7671; ГД-57/1686; ГП-60/3883; ГД-57/7517; ГД-58/4081; ГП-61/3809); (1–12) (ГП-63/12534, ГД-58/5190; ГП-59/5022; ГП-61/1585; ГД-58/?; ГД-58/78805; ГД-58/10309; ГП-57/4233; ГП-60/3276; ГП-60/6897; ГП-63/12514; ГП-63/5841) and (14–20) — Type II (ГП-57/7937; ГП-63/7855; ГД-57/9434; ГП-59/3359; ГД-58/4382; ГП-60/8305; ГП-59/5204; (13, 21) — Type III (ГП-64/1548; ГП-63/9637).

**Fig. 33.** Pottery lids of different types: (1) ГП-59/3359 (lid) and ГП-59/4181 (vessel) from different assemblages; (2) ГП-59/7029; (3) ГП-61/3809; (4,5) ГП-60/3883. Photograph from M. Karger's personal archive and photograph by A. Kononovich.

**Fig. 34.** Small bowls (1, 2, 6) ГД-58/5883; ГД-59/2962; ГП-61/1957) and small scoops (3, 4, 5, 7–13) ГП-63/12637; ГП-57/9495, ГП-57/9493; ГП-62/2903, ГП-59/4060; un-numbered; ГД-58/3572; un-numbered). Photograph from M. Karger's personal archive and photograph by A. Kononovich.

**Fig. 35.** Group of wheel-turned pottery stamps (19 groups, diagram).

**Fig. 36.** Types of vessel bases with stamps (diagram).

**Fig. 37.** Glazed pottery vessels: (1–8) miniature pots and jars (ГД-58/5918; ГП-61/6873; ГП-61/2766; ГД-58/5919; ГД-58/3581; ГП-63/12532 (unglazed); ГД-58/5920; ГП-60/8066); (9–11) — small jugs (ГД-57/9587; ГП-63/980; ГД-58/5921; (12–16) — fragments of miniature vessels (ГП-61/2341; ГП-60/11858; ГП-63/12535; ГД-57/13030; ГП-63/12533); (17–18) — faceted hollow handles with traces of glaze (ГД-58/4451; ГД-58/9723).

### Fishing Equipment from the medieval fortified settlement of “Izyaslavl”

**Fig. 1.** Fishing tackle from excavations at the medieval site “Izyaslavl”: (1) — needle for making nets; (2–3) — weights; (4–6) — hooks; (7) — spoon bait; (8–13) fishing spears; (1) bone; (2) lead; (3) clay; (4–13) — iron. The drawings were made by O. Ovsyannikov and their digital processing was carried out by E. Kononovich.

### Fauna from the excavations at the medieval settlement of “Izyaslavl”

**Fig. 1.** Skeletons of domesticated animals, which perished during the destruction of the town: (1) — skeletons of a cow and a horse found during excavations in the citadel in 1958; (2) — skeleton of a cow found in the western part of the *Detinets* (citadel) in 1957; (3) — skull and long bones of a horse found in the western part of the “*Posad*” (suburb) in 1964; (4) skull of a horse found in the north-western part of the “*Posad*” in 1960. Photograph from M. Karger's personal archive.

**Fig. 2.** Skeleton of a dog found in the western part of the “*Posad*” in 1961. Photograph from M. Karger's personal archive.

### Colour plates

1. Jugs: (1) ГП-60/6574; (2) ГД-58/3560; (3) ГД-58/3567; ГП-64/1643. Photograph by A. Kononovich.

2. Amphora of Type III (ГП-62/2945). Photograph by A. Kononovich.

3. Miniature glazed vessels: (1) ГД-58/3579 (without glaze), (2) ГД-58/5918, (3) ГД-57/9587, (4) ГД-58/5920, (5) ГД-58/5921, (6) ГД-58/3569 (without glaze). Photograph by A. Kononovich.

4. Miscellaneous objects: (1) — fibula (ГП-61/169); (2, 3) — fragments of painted vessels (ГП-59/3149; ГП-59/4878); (4) small amphora fragment (ГД-58/5877). Photograph by A. Kononovich.